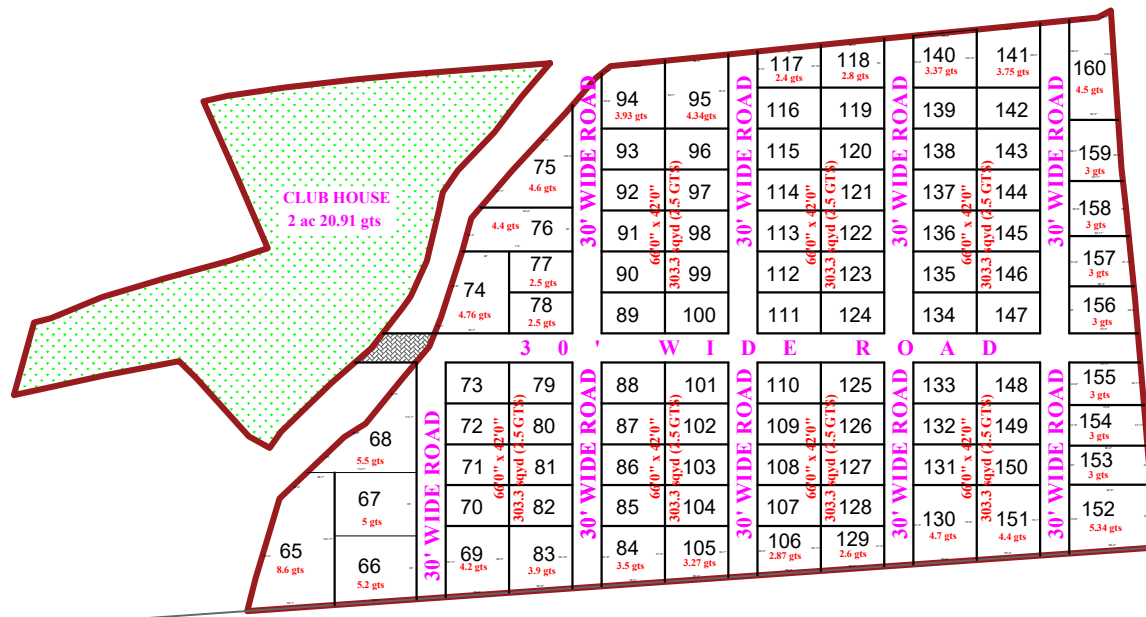
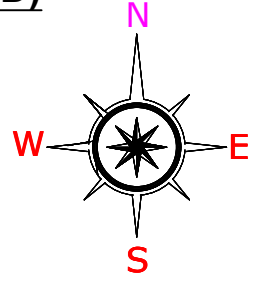
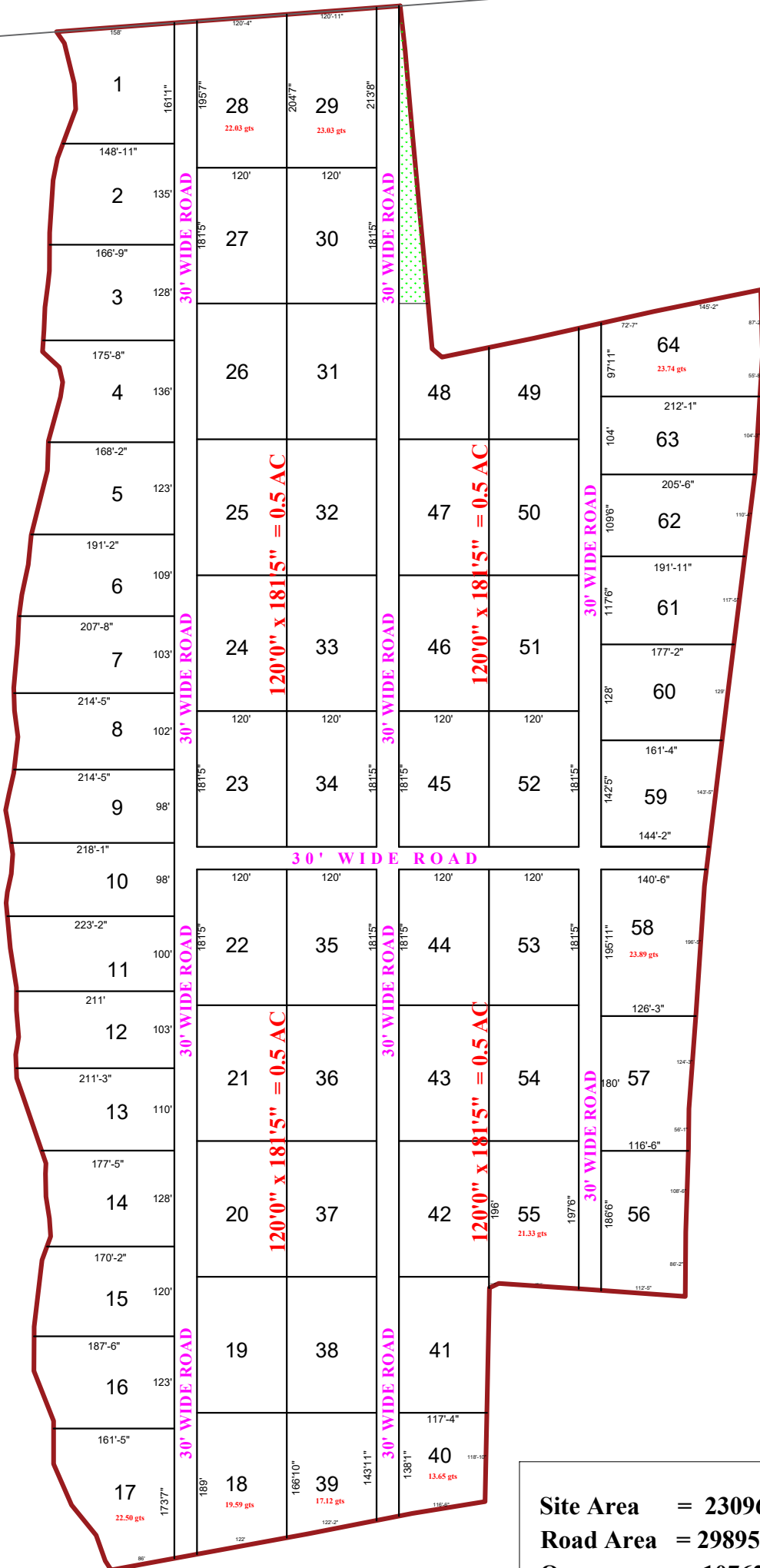


**SITE PLANSHOWING IN SY NO: 830,831,832,836,837,838 & 134,135,136
SITUTED AT AVANCHA (V) THIMMAJIPET (M) NAGAR KURNOOL (D)**



ROAD



Site Area = 230964.812 sqyd (47.72 ac) (47 ac 29.12 gts)
Road Area = 29895.6 sqyd
Openspece = 10762.4 sqyd
Plotted Area = 190306.812sqyd
Plot No.s 1 TO 64 (0.5 ac)