

TOWER - 4&5 TYPICAL FLOOR PLAN

11-10-2023

02

4 BHK WEST FACING
3500 SQFT

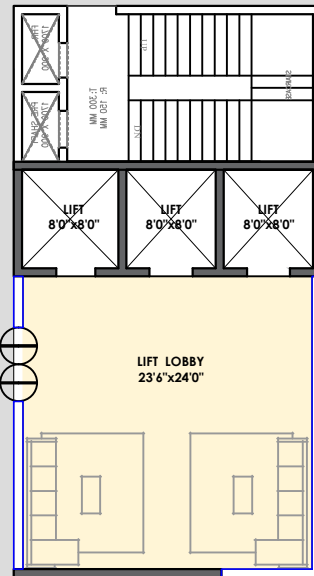
01

4 BHK EAST FACING
3500 SQFT



8'3" WIDE CORRIDOR

12'0" WIDE CORRIDOR



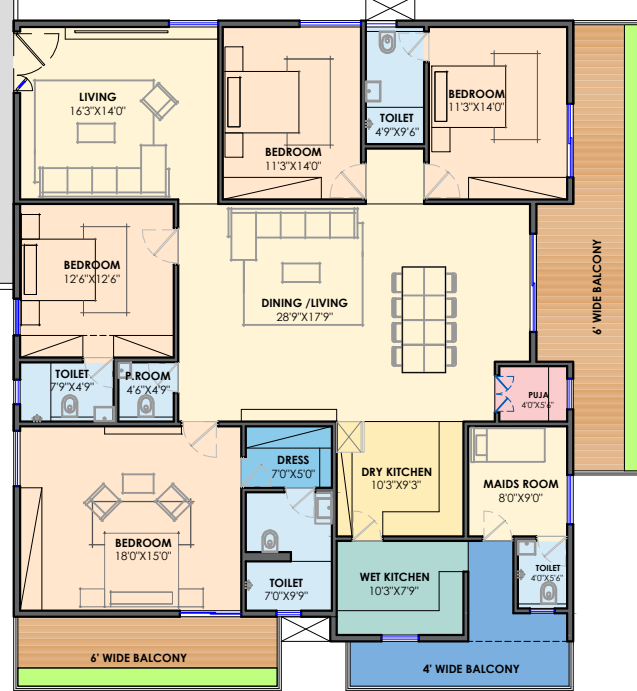
4 BHK WEST FACING
3500 SQFT

03



4 BHK EAST FACING
3500 SQFT

05



4 BHK WEST FACING
3500 SQFT

04

