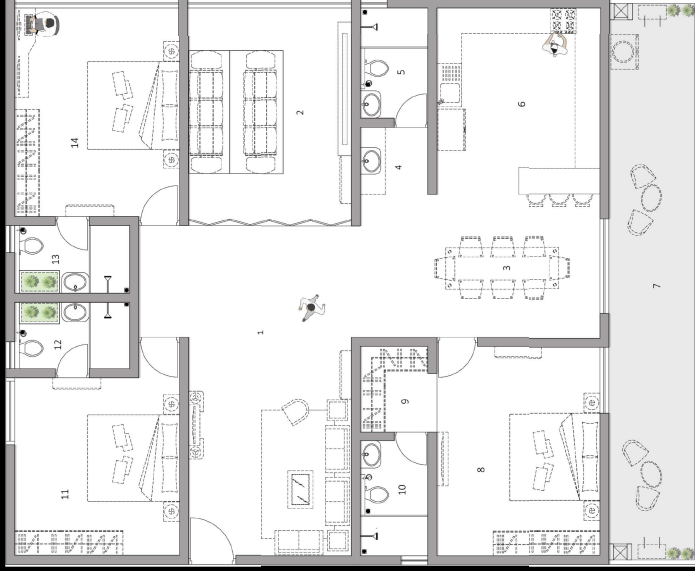


A6 - 4BHK West Facing | 2850 sq.ft



- 1 LIVING - 24'-2" X 12'-0"
- 2 HOME THEATER/ BEDROOM - 24'-2" X 12'-0"
- 3 DINNING - 10'-6" X 18'-2"
- 4 WASH - 4'-11" X 4'-11"
- 5 TOILET - 8'-0" X 4'-11"
- 6 KITCHEN - 13'-8" X 12'-0"
- 7 SIT-OUT - 41'-4" X 6'-6"
- 8 MASTER BEDROOM - 15'-3" X 12'-0"
- 9 WALK-IN - 6'-3" X 4'-11"
- 10 TOILET - 8'-4" X 4'-11"
- 11 BEDROOM - 13'-0" X 12'-0"
- 12 TOILET - 4'-11" X 8'-4"
- 13 TOILET - 4'-11" X 8'-4"
- 14 BEDROOM - 15'-3" X 12'-0"

