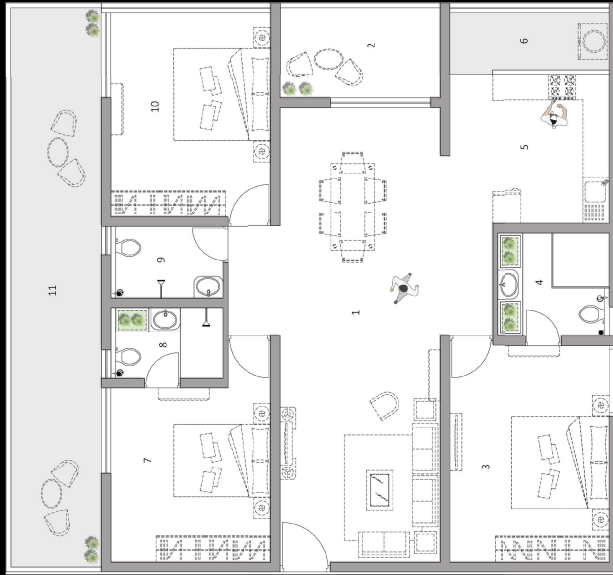




A1 - 3BHK West Facing | 2250 sq.ft



- 1 LIVING & DINING - 31'-3" X 11'-0"
- 2 SIT-OUT - 6'-6" X 11'-0"
- 3 MASTER BEDROOM - 14'-11" X 11'-0"
- 4 TOILET - 7'-1" X 7'-8"
- 5 KITCHEN - 10'-3" X 11'-0"
- 6 UTILITY - 3'-11" X 11'-0"
- 7 BEDROOM - 12'-0" X 11'-0"
- 8 TOILET - 4'-11" X 7'-8"
- 9 TOILET - 4'-11" X 7'-8"
- 10 BEDROOM - 14'-0" X 11'-0"
- 11 SIT-OUT - 39'-2" X 6'-6"

