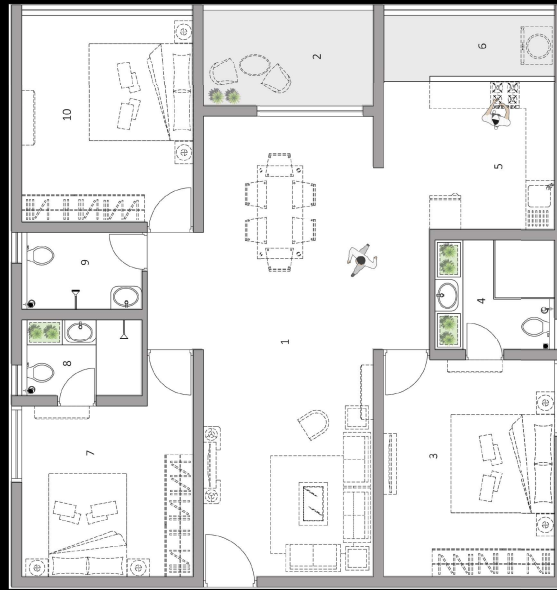




A2, A5 - 3BHK West Facing | 1820 sqft



- 1 LIVING & DINNING - 28'-9" X 11'-0"
- 2 SIT-OUT - 6'-6" X 11'-0"
- 3 MASTER BEDROOM - 14'-0" X 11'-0"
- 4 TOILET - 7'-4" X 7'-8"
- 5 KITCHEN - 9'-8" X 11'-0"
- 6 UTILITY - 3'-11" X 11'-0"
- 7 BEDROOM - 12'-0" X 11'-0"
- 8 TOILET - 4'-11" X 7'-8"
- 9 TOILET - 4'-11" X 7'-8"
- 10 BEDROOM - 14'-0" X 11'-0"

