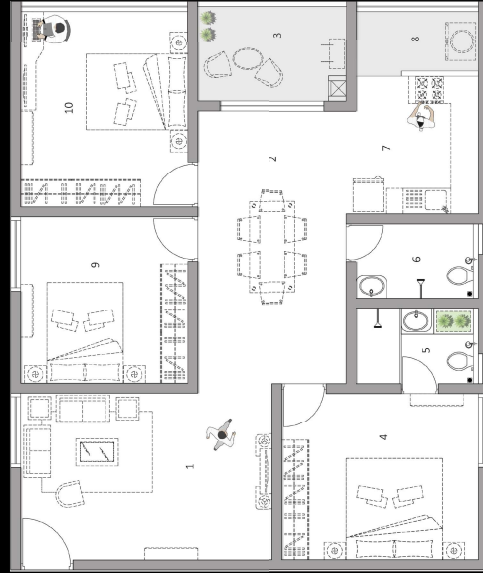


A3, A4 - 3BHK West Facing | 1615 sq.ft.



- 1 LIVING - 11'-0" X 16'-7"
- 2 DINING - 18'-0" X 9'-10"
- 3 SIT-OUT - 6'-6" X 9'-10"
- 4 MASTER BEDROOM - 11'-0" X 13'-0"
- 5 TOILET - 4'-11" X 8'-0"
- 6 TOILET - 4'-11" X 8'-0"
- 7 KITCHEN - 9'-2" X 8'-0"
- 8 UTILITY - 4'-7" X 8'-0"
- 9 BEDROOM - 11'-0" X 11'-0"
- 10 BEDROOM - 12'-11" X 11'-0"

